

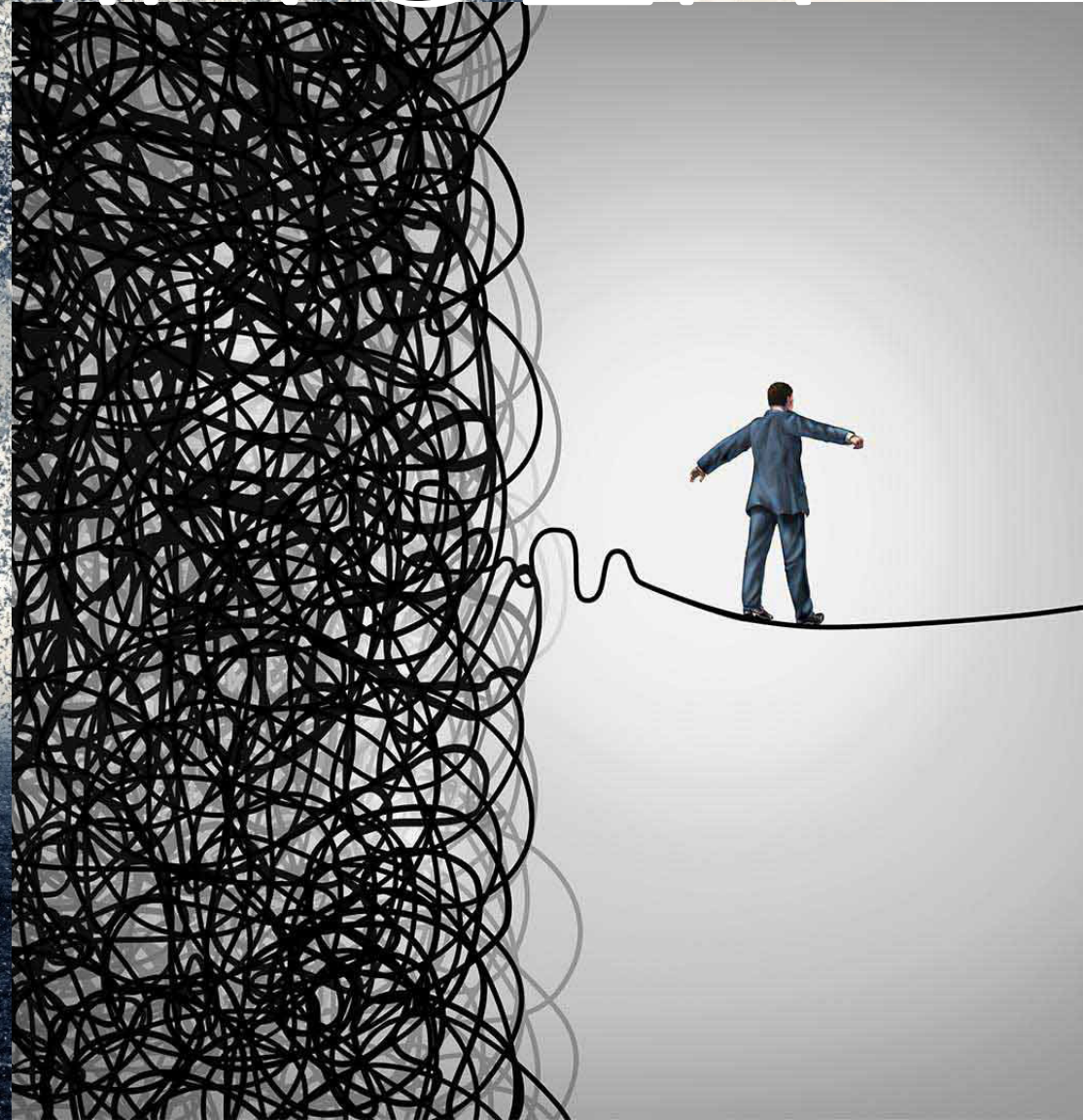
A large, pixelated cross is the central focus, composed of many small, dark, irregular shapes. It stands in a vast, flat, desolate landscape under a cloudy sky. A small, dark silhouette of a person is walking away from the viewer towards the horizon on the right side of the image. The overall color palette is muted, with greys, blues, and browns.

**PEACE BE  
WITH YOU**

# FEAR & ANGER

**Fear is the path  
to the dark side.  
Fear leads to anger,  
anger leads to hate,  
Hate leads to  
suffering.**

**Yoda**



# PEACE > FEAR

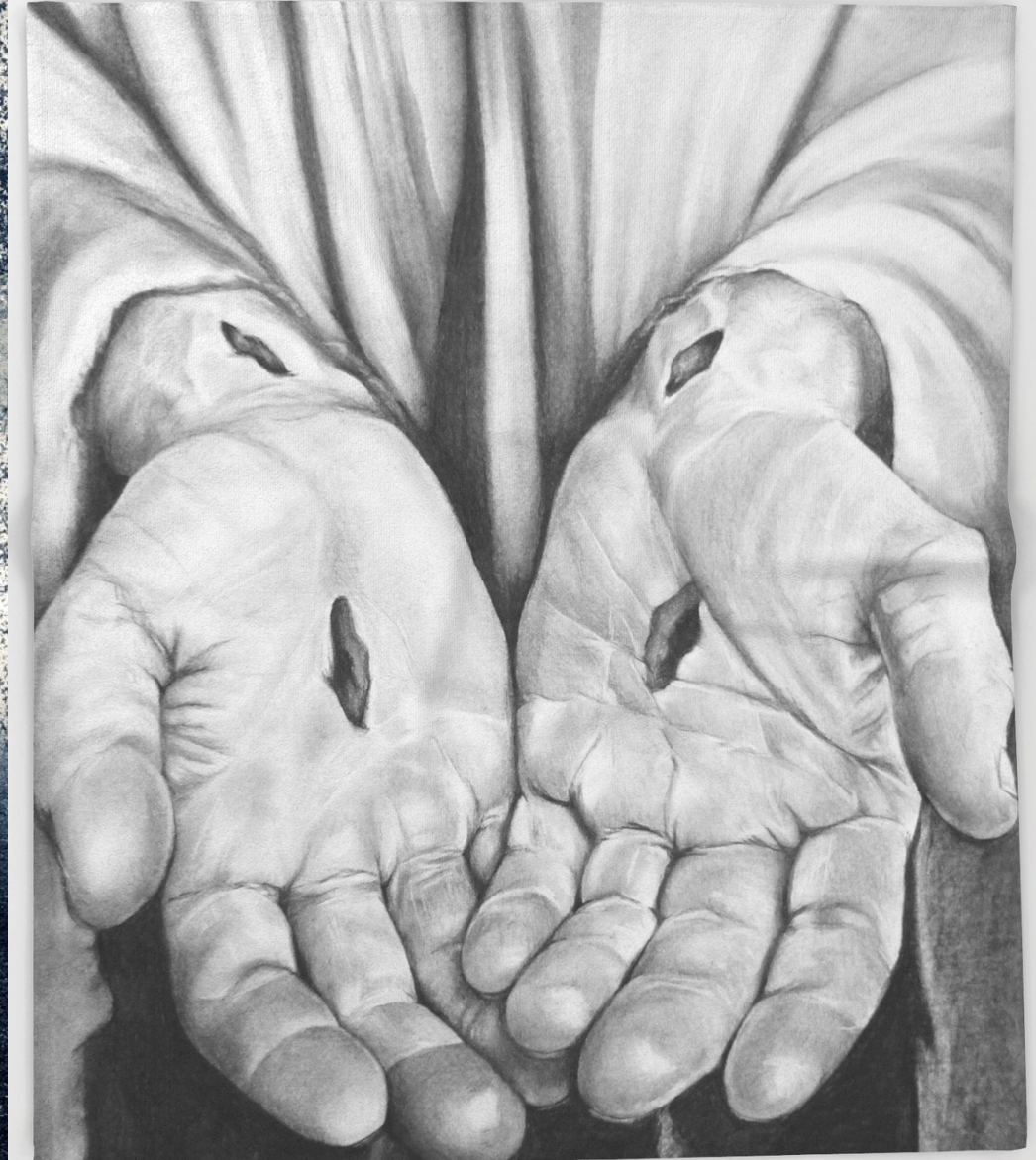
Jesus came and stood among them and said,

PEACE  
BE WITH  
YOU

JOHN 20:26

# NO FEAR IN DEATH

NO GUILT IN LIFE,  
NO FEAR IN DEATH  
THIS IS THE POW'R OF CHRIST IN ME  
FROM LIFE'S FIRST CRY  
TO FINAL BREATH  
JESUS COMMANDS MY DESTINY  
NO POW'R OF HELL,  
NO SCHEME OF MAN  
CAN EVER PLUCK ME FROM HIS HAND  
'TIL HE RETURNS  
OR CALLS ME HOME  
HERE IN THE POW'R OF CHRIST  
I'LL STAND



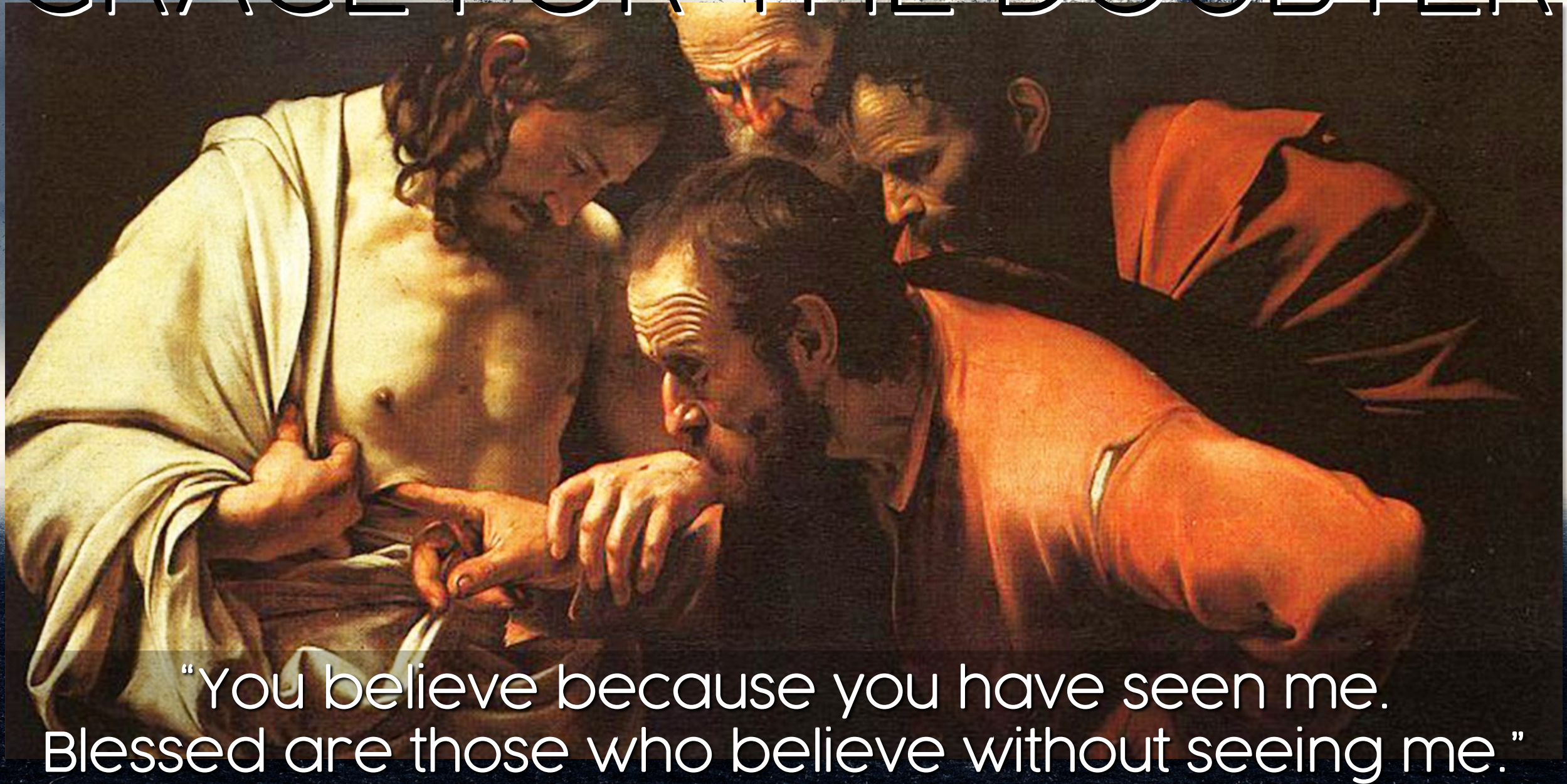
# I AM SENDING YOU...



Jesus said to them again, "Peace be with you. As the Father has sent me, so I send you." When he had said this, he breathed on them and said to them, "Receive the Holy Spirit.

**John 20:21-22**

# GRACE FOR THE DOUBTER



“You believe because you have seen me.  
Blessed are those who believe without seeing me.”